

Griffin House

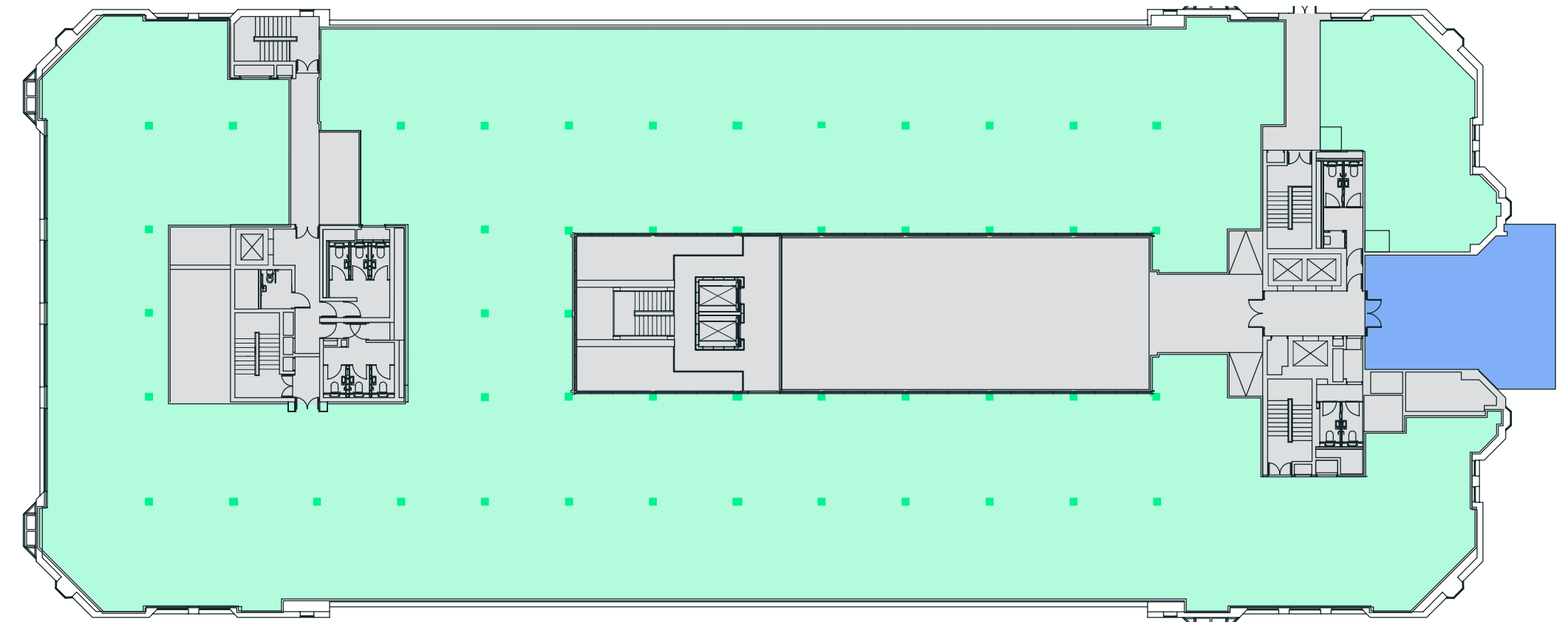
160 Hammersmith Road
London W6

Accommodation

Floor	Use	Sq Ft	Sq M
Third	Office	20,599	1,913.7
Second	Office	23,190	2,154.4
First	Office	23,092	2,145.3
Ground	Office	21,109	1,961.0
	Reception	882	81.9
	Atrium Base	1,981	184
	BMA	109	10.1
Total		90,962	8,450.4

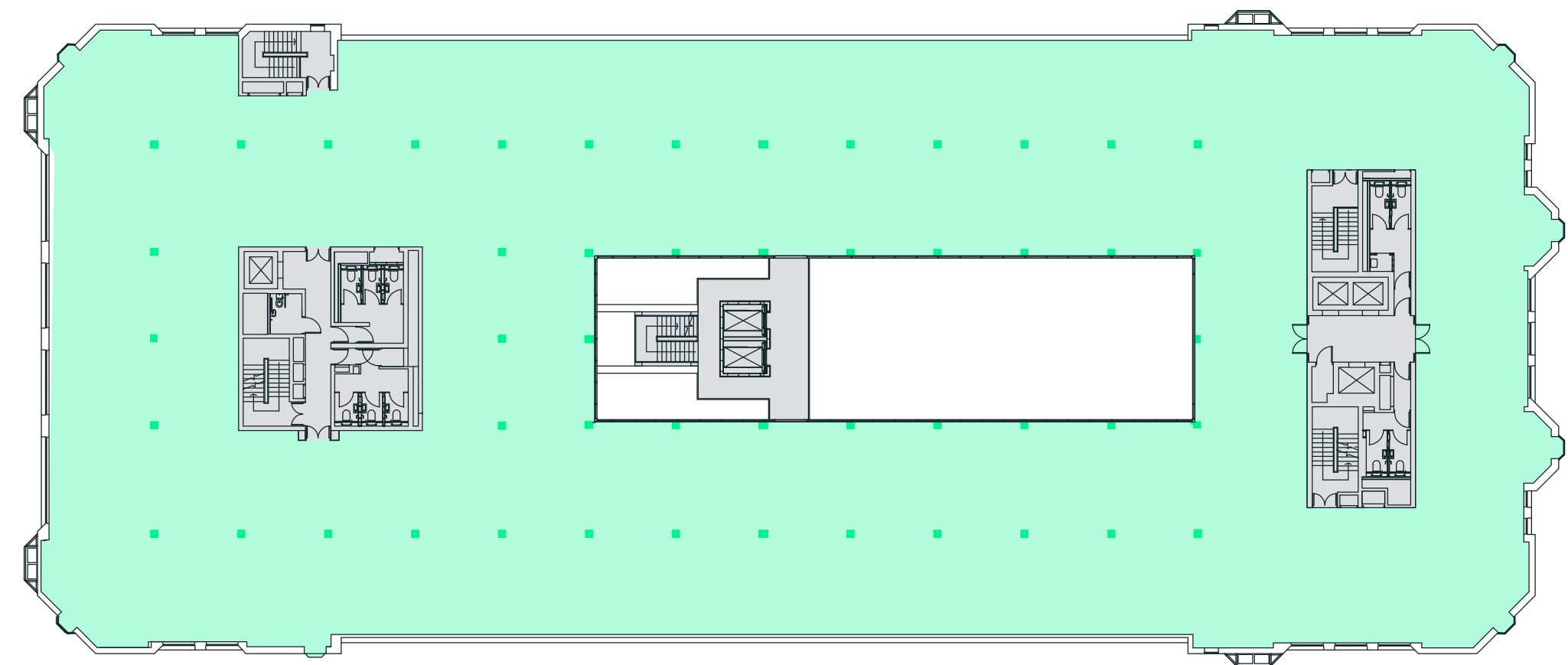
Ground Floor

21,109 Sq Ft (1,961.0 Sq M)



Typical Upper Floor

23,190 Sq Ft (2,154.4 Sq M)



Office Reception Core

Plans not to scale, for indicative purposes only.

